

“How would you treat?”

Dr. Remo Albiero
Istituto Clinico San Rocco
Ome (BS) - Italy

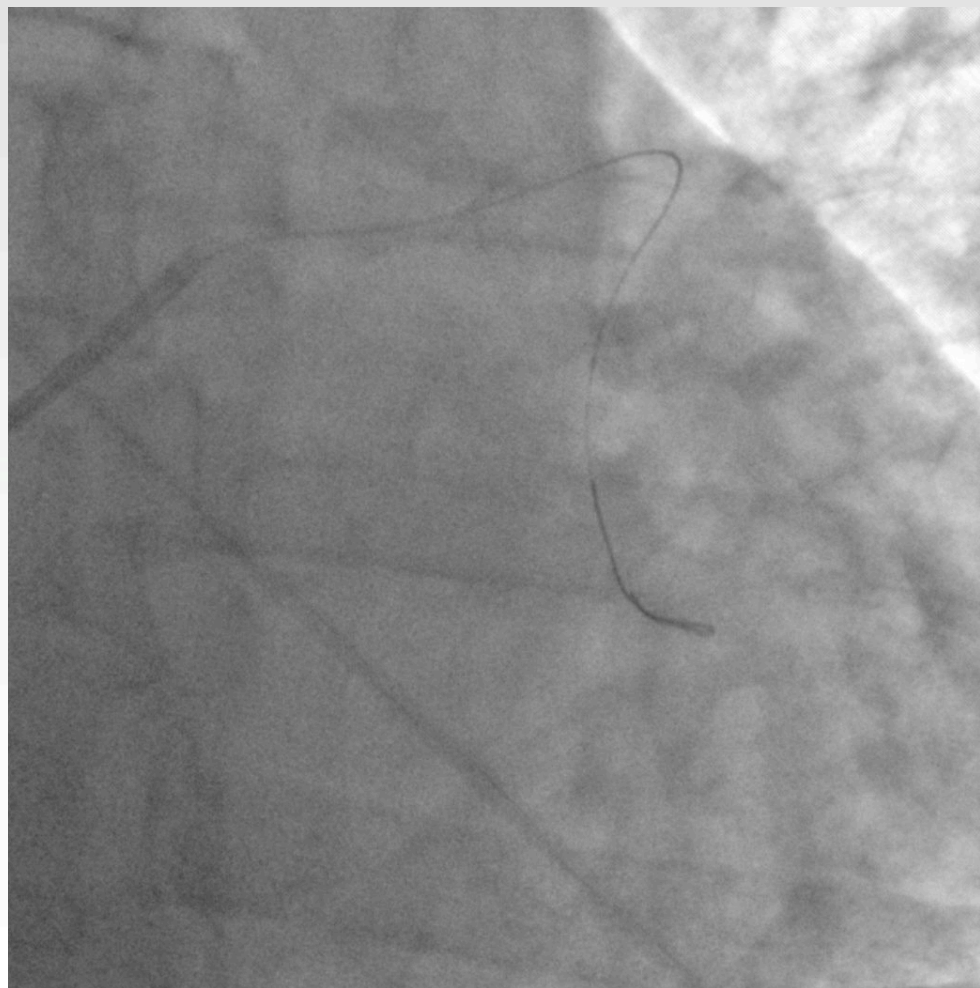
STEMI (< 3h)

- 53 years old male
 - no coronary risk factors
- Coronary Angiography:
 - Distal LM stenosis
 - Ostial LAD thrombotic subocclusion
 - No significant stenosis in RCA and LCx

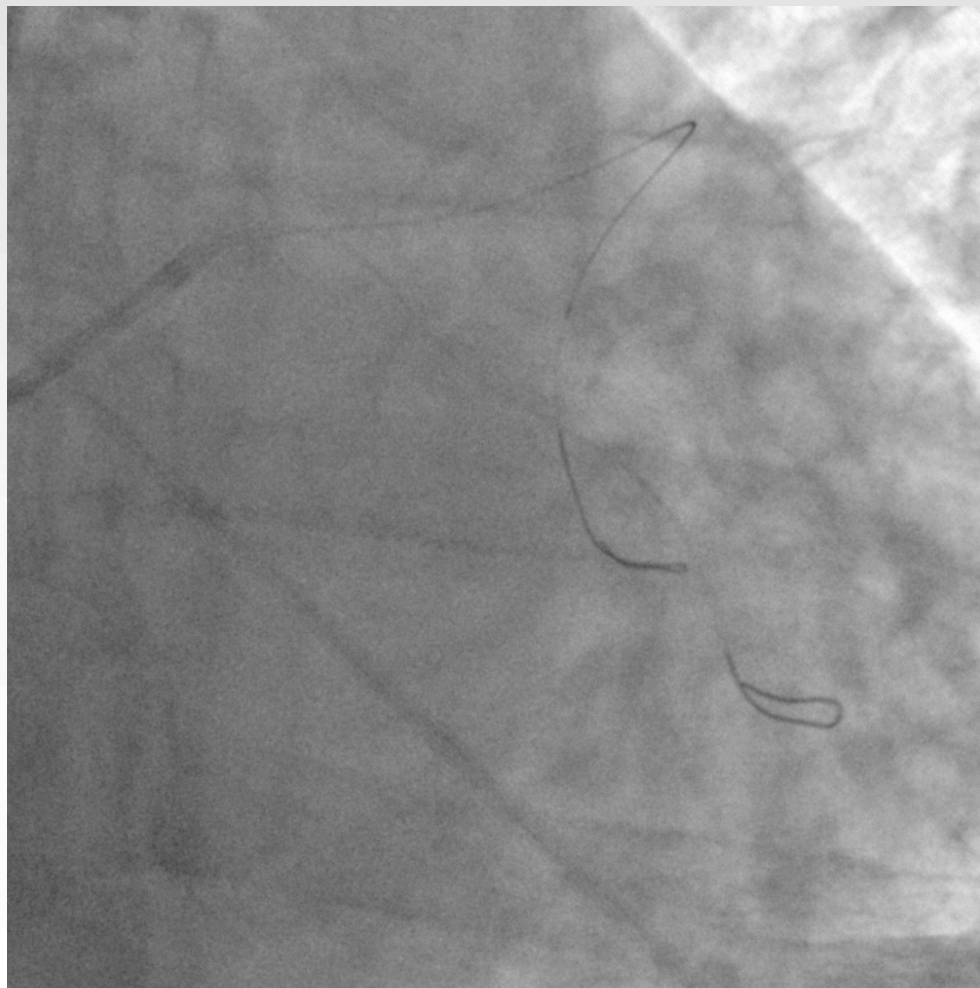
Baseline Angiography



After guidewire cross into the LAD (BMW Universal II)



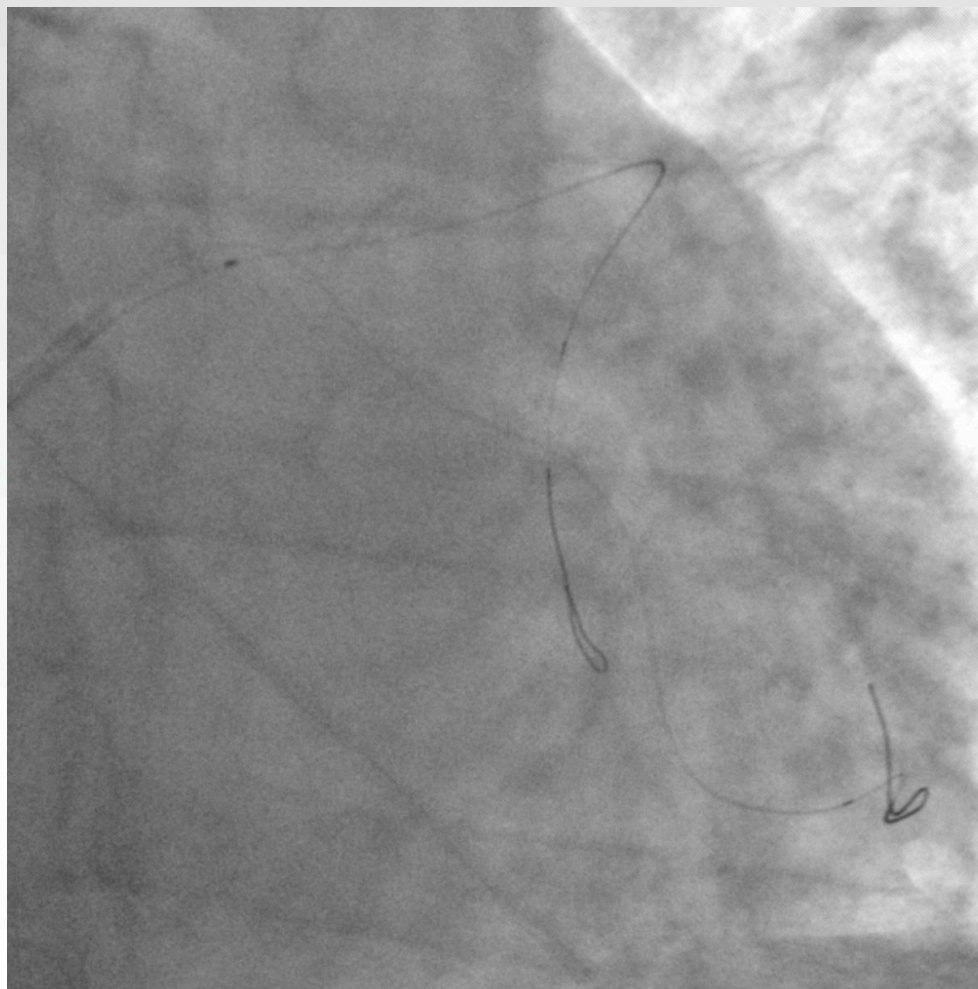
After 2° guidewire cross into the LCx (BMW Universal II)



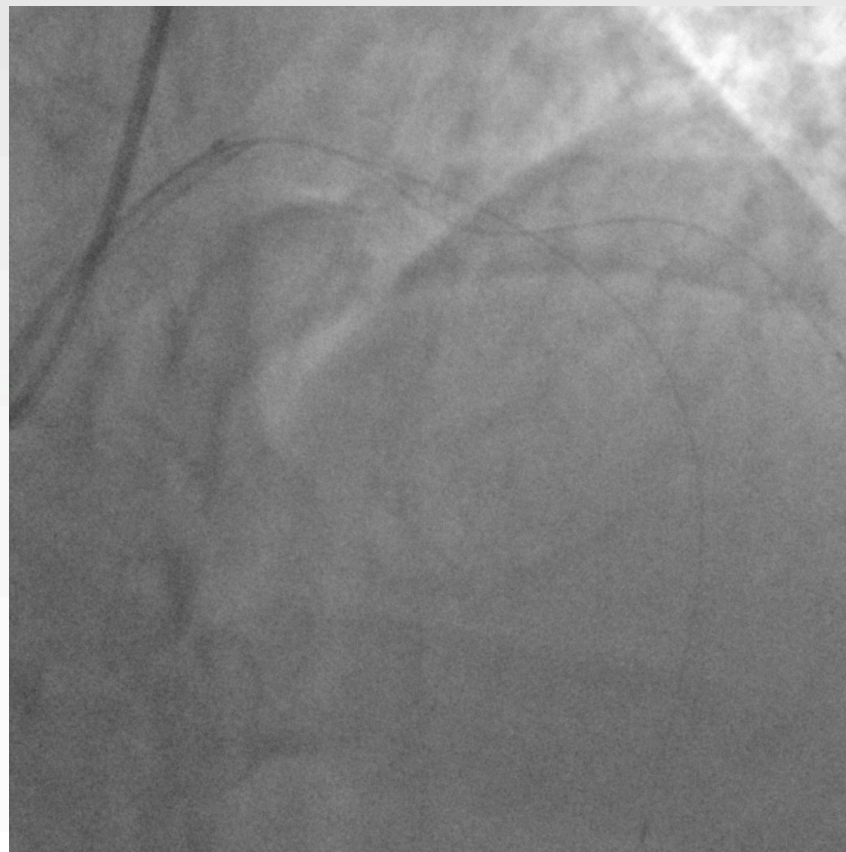
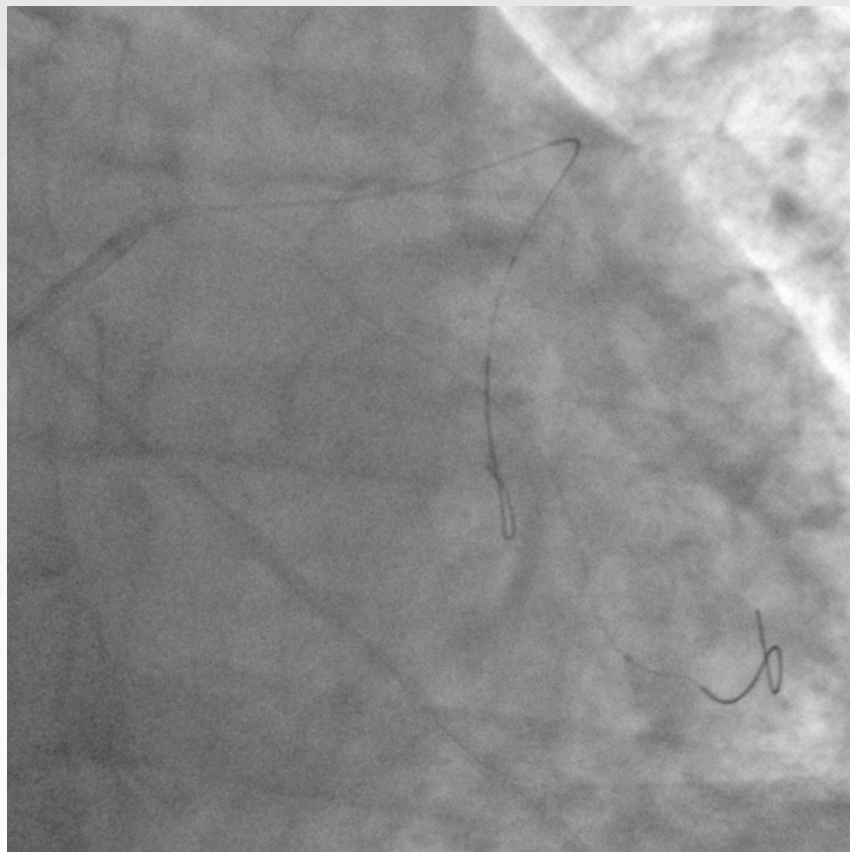
Distal LM Stenosis & Ostial LAD Trombotic Subocclusion

How would you treat?

Thombo-Aspiration (EXPORT ADVANCE) into the LAD

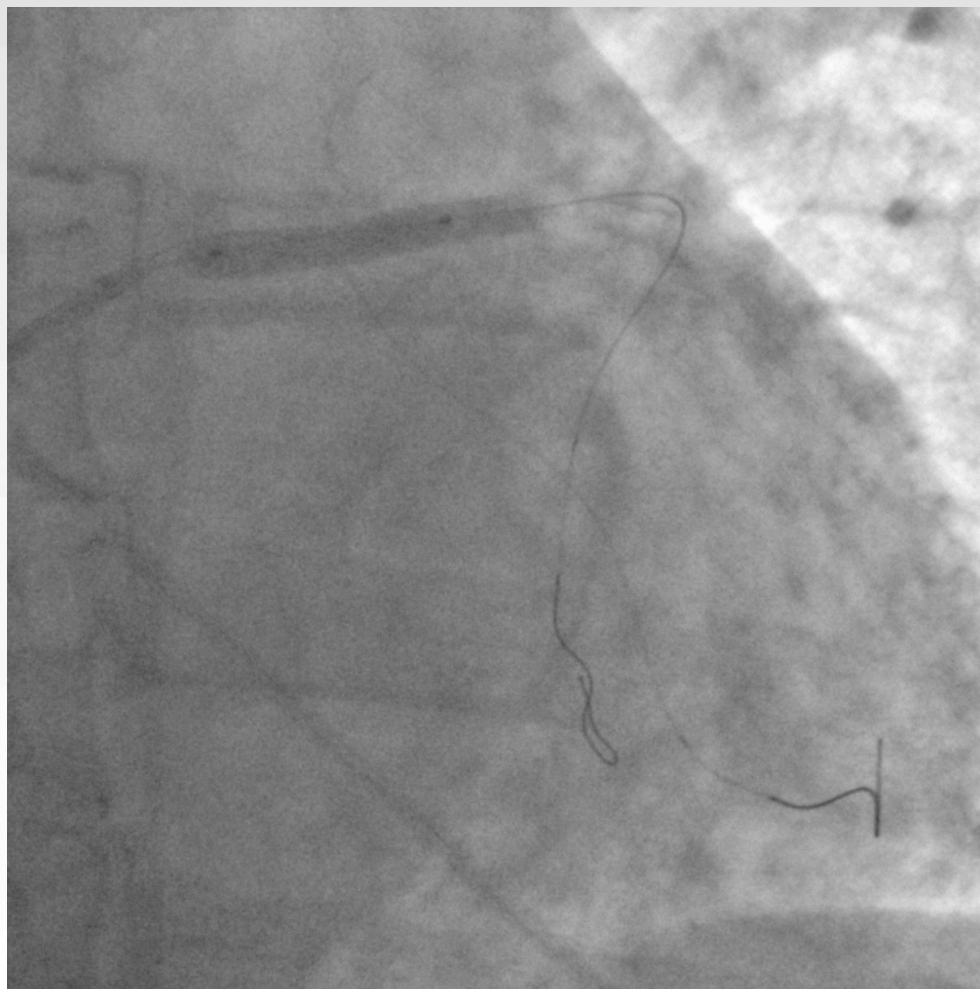


After Thrombo-Aspiration



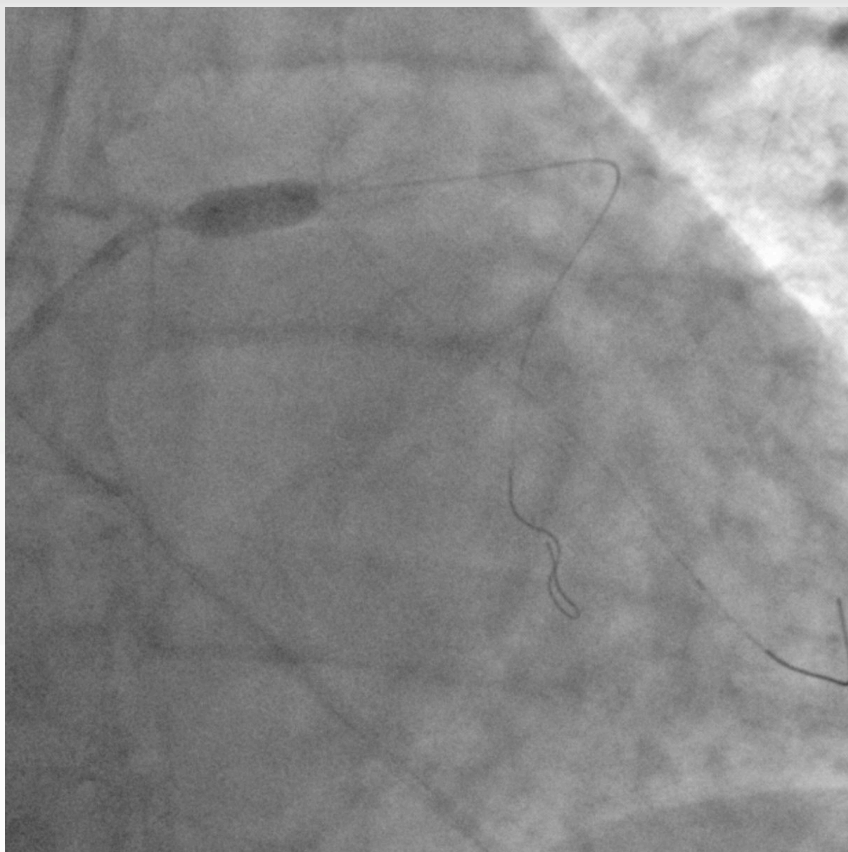
Direct Stenting LM->LAD

(Resolute Onyx 4.0 mm x 22 mm)



POT

NC TREK 5.0 mm x 8 mm

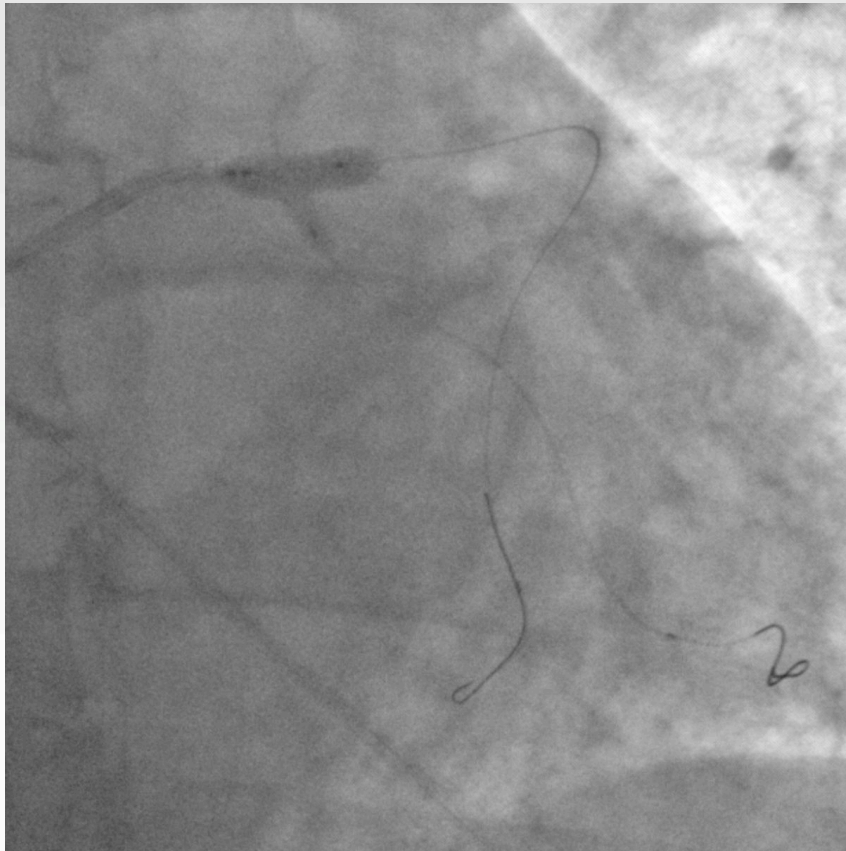


After POT



By visual estimation:
LCx diameter = 3.0-3.5 mm

1° KBI @18 atm
(NC Emerge 4.5x12 & 3.0x12 mm)



LAD postdilation
@18 atm



2° KBI @20 atm

(NC Emerge 4.5x12 & 3.0x12 mm)



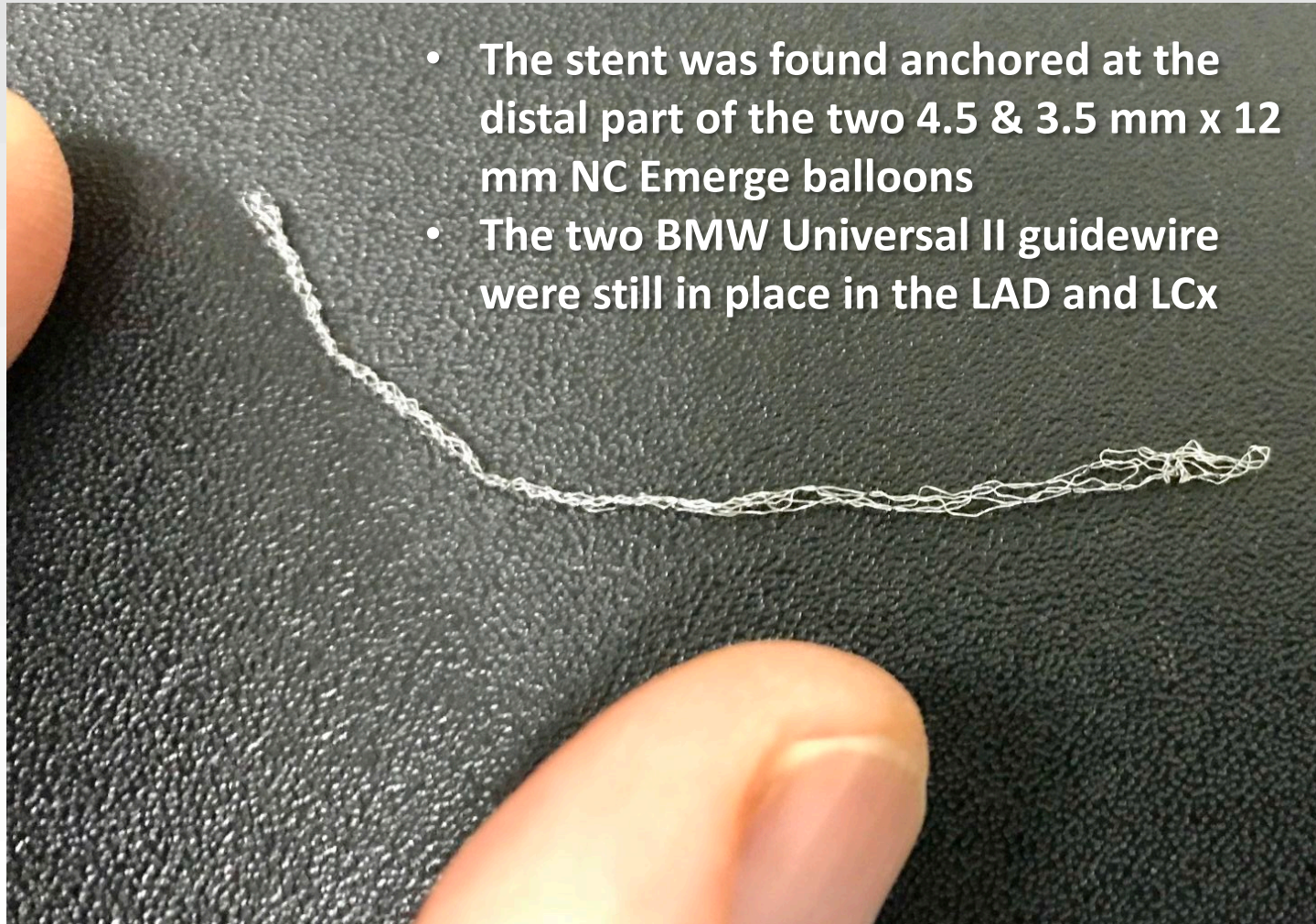
3° KBI @20 atm

(NC Emerge 4.5x12 & 3.5x12 mm)



The 2 balloons were simultaneously removed with some resistance
(as expected using 2 large, NC balloons)

The Stent was Accidentally Removed

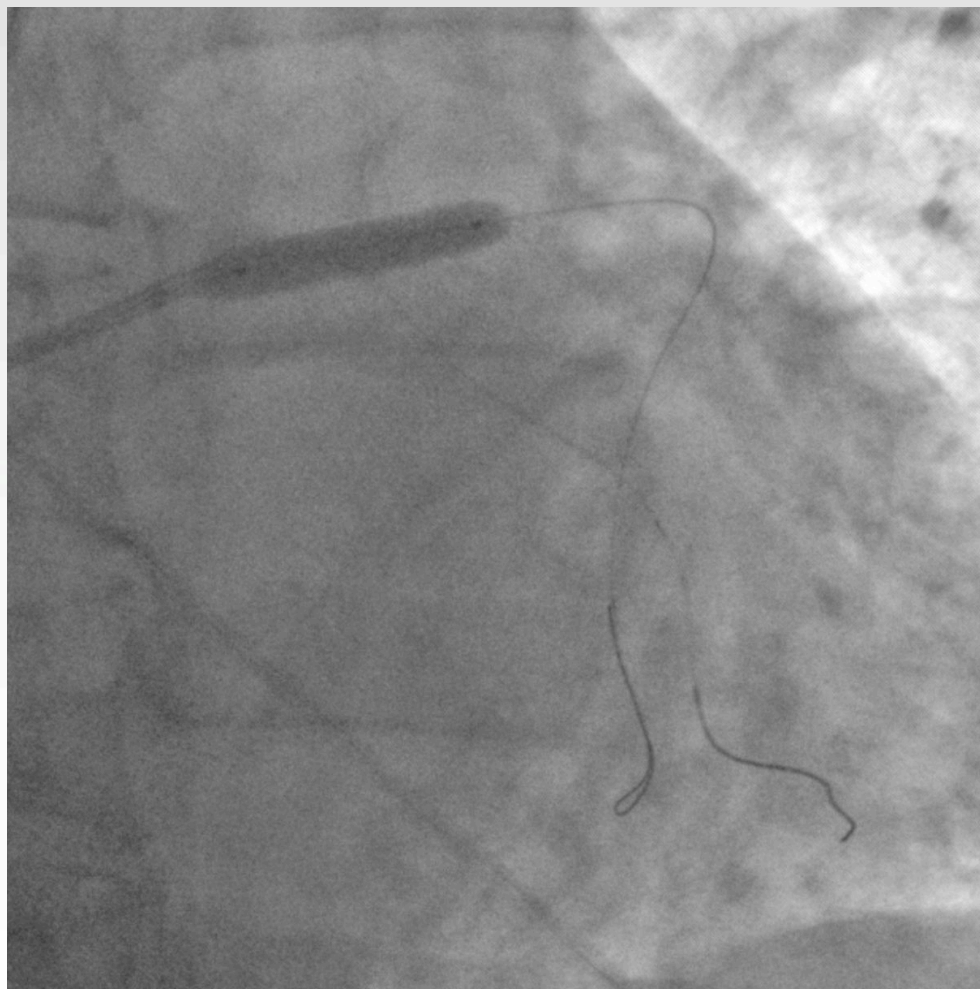


No stent shadow



New Direct Stenting

Resolute Onyx 4.5 mm x 22 mm @ 16 atm



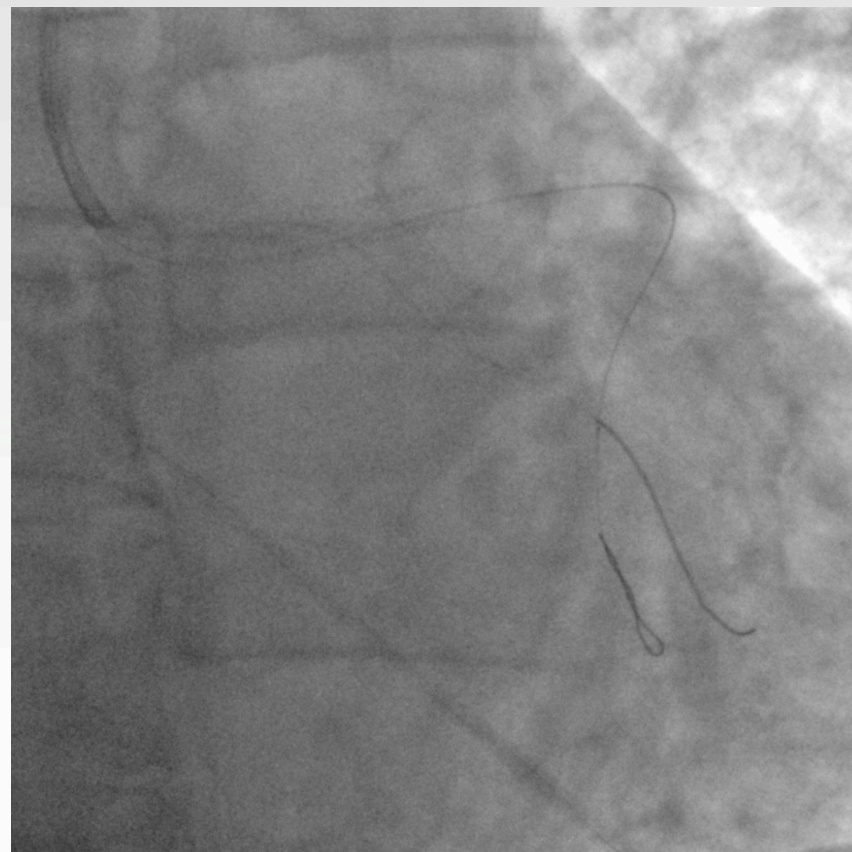
Final POT

NC TREK 5.0 mm x 8 mm @ 20 atm

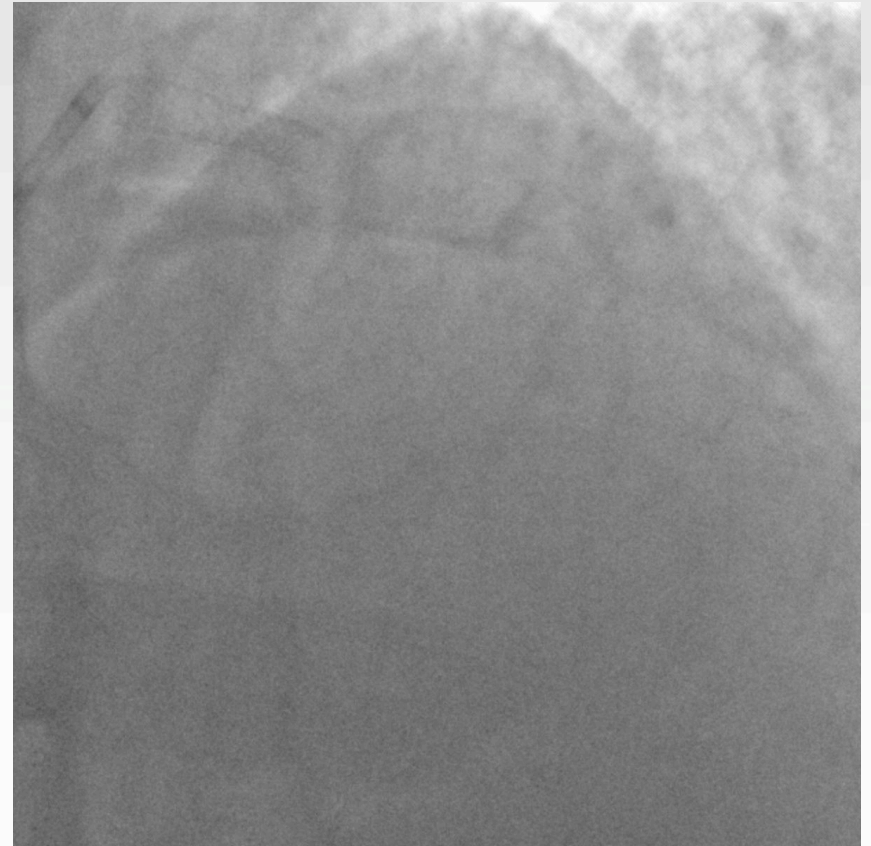
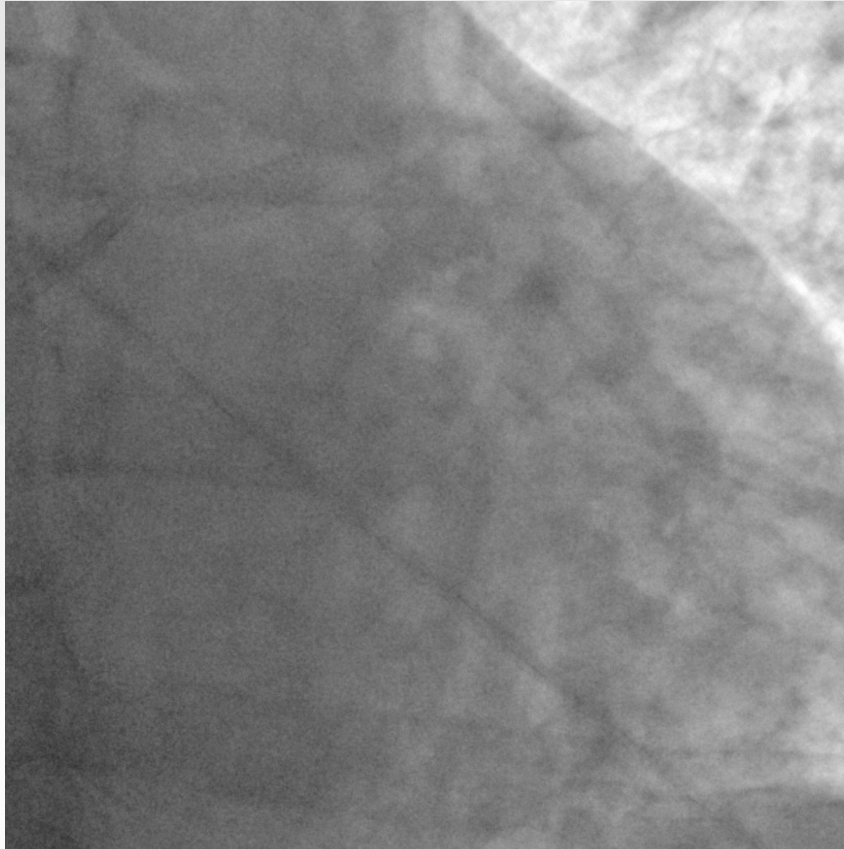


Safe

SB guidewire removal



Final Result



Backup slide

6-month Follow-up

